



DELPH MAG LOCATOR

REAL-TIME MAGNETIC FILTERING AND MAPPING TOOL

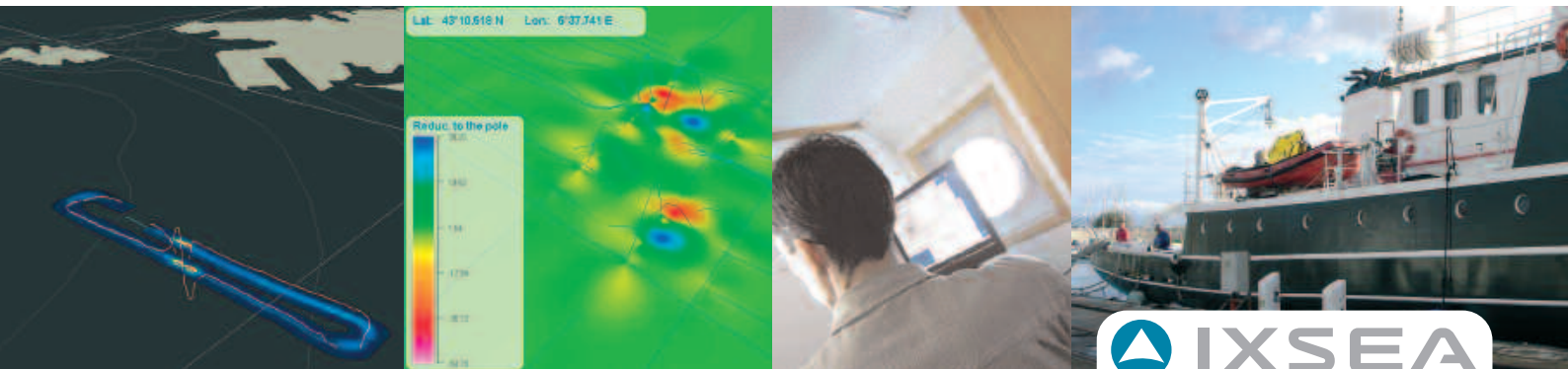
DELPH MAG LOCATOR is a real-time and batch survey productivity tool. This natural complement to the MAGIS sensor provides a fully processed magnetic map even in real-time.

FEATURES

- State-of-the-art algorithm for diurnal field filtering
- Real-time geocoded mapping
- Intuitive graphic tools
- Replay mode, batch processing

BENEFITS

- No prerequisite in magnetic science
- See-and-act navigation capability
- Direct mapping display and handling
- Mapping small and large objects



APPLICATIONS • Mapping buried objects • Pipe and cable survey • Shipwreck search and salvage

DELPH MAG LOCATOR

REAL-TIME MAGNETIC FILTERING AND MAPPING TOOL

DETAILED FEATURES

Processing

Navigation processing

Diurnal field filtering using a reference station data or a state-of-the-art spatial filter

Outputs to industry standard file formats including XTF, ASCII, TIF, FLT

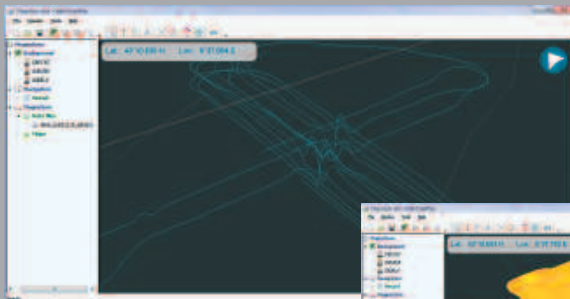
Mapping

Real-time and post processed magnetic maps:

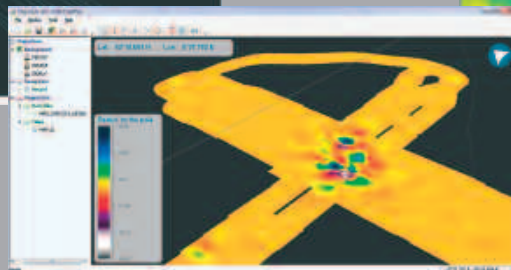
- Magnetic field anomaly
- Analytic signal
- Reduction to the pole

Geographic correlation with other sensor data

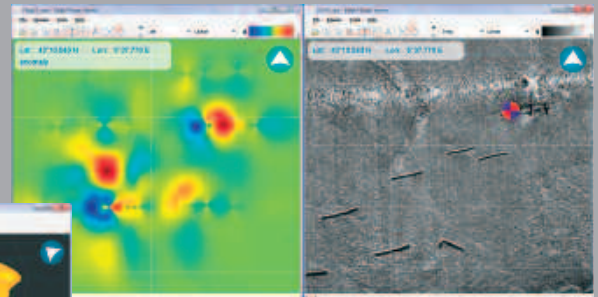
WORKSPACE OVERVIEW



Delph Road Map -
3D Anomaly Display



Delph Road Map - 3D Map Display



Delph Mosaic Viewer -
Correlation with a sonar mosaic

REQUIREMENTS & COMPATIBILITY

Minimum workstation configuration : Pentium IV, Windows XP

IXSEA : • EMEA : +33 (0)1 30 08 98 88 • AMERICAS : +1 (781) 937 8800 • ASIA : +65 6747 4912 • www.ixsea.com

Specifications subject to change without notice